

Seismic Behavior Analysis of High-Rise Buildings

Prof. Pallavi Bhende
Head of the Department
Department of Civil Engineering,
Wainganga College of
Engineering and Management,
Nagpur

Dr. Abhijeet Nardey
(Guide)
STRUCTURE ENGINEER
Strongfort Associates,
Gondia

Prof. Bajrang Ambhore
(CO-Guide)
Assistant Professor
Department of Civil Engineering,
Wainganga College of
Engineering and Management,
Nagpur

Pallavi A. There
Department of Civil
Engineering, Wainganga
College of
Engineering and
Management, Nagpur

ABSTRACT -

High-rise buildings are highly vulnerable to seismic forces due to their significant height, slenderness ratio, and complex dynamic behavior under lateral loading. As urban development increasingly favors vertical expansion, ensuring the seismic safety of tall structures has become a critical aspect of modern structural engineering. This project focuses on the seismic behavior analysis of high-rise buildings using advanced computational modeling techniques, particularly Finite Element Analysis (FEA).

The study aims to evaluate the response of multi-story structures when subjected to various earthquake ground motions and to understand the influence of different design parameters on overall performance. A series of high-rise structural models are developed and analyzed under dynamic loading conditions to investigate parameters such as storey displacement, inter-storey drift ratio, base shear, and stress distribution.

Different structural configurations, including moment-resisting frames, shear wall systems, and outrigger-supported structures, are compared to identify their relative efficiency in dissipating seismic energy. Additionally, the effects of material variations (e.g., concrete grades and steel reinforcement ratios) and damping mechanisms (such as tuned mass dampers or base isolation systems) are systematically examined. The simulation results are interpreted to determine critical failure zones, structural weaknesses, and potential instability regions.

Based on these findings, suitable retrofitting techniques and design modifications are proposed to enhance structural resilience.

The outcomes of this project contribute to optimizing seismic design strategies for high-rise buildings, ensuring not only compliance with IS 1893 (Part 1): 2016 and other international seismic design codes but also safeguarding life and property during strong earthquake events.

Overall, this research provides a comprehensive understanding of how design choices affect seismic performance and offers practical recommendations for improving the structural safety, serviceability, and sustainability of high-rise buildings in earthquake-prone regions.

KEYWORDS –

High-rise buildings, Seismic forces, Earthquake resistance, Finite Element Analysis (FEA), Structural dynamics, Multi-storey structures, Lateral loading, Seismic response, Storey displacement, Inter-storey drift ratio, Base shear, Stress distribution, Moment-resisting frames, Shear wall systems, Outrigger systems, Dynamic analysis, Earthquake ground motion, Structural configurations,

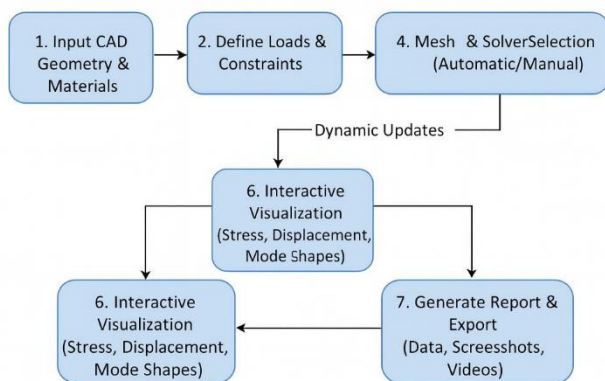
Damping mechanisms, Tuned mass damper, Base isolation, Material properties, Concrete grade, Steel reinforcement, Structural stability, Failure zones, Retrofitting techniques, Structural resilience, Performance-based design.

INTRODUCTION-

The rapid growth of urbanization has led to an increased demand for vertical expansion in cities, resulting in the construction of high-rise buildings across the world. These tall and slender structures not only serve functional and aesthetic purposes but also represent engineering excellence and

technological advancement. However, due to their height and flexibility, high-rise buildings are inherently more susceptible to seismic forces compared to low-rise structures.

The complex interaction between structural components under dynamic earthquake loading makes it essential to understand their behavior accurately to ensure safety, stability, and serviceability. Earthquakes generate ground motions that induce lateral forces and dynamic responses within structures. For high-rise buildings, these effects can lead to excessive displacements, inter-storey drifts, and potential failure of critical structural elements. As a result, the study of seismic performance has become a key area of research in structural and earthquake engineering.



A thorough understanding of how tall structures respond to seismic excitations helps engineers design buildings that not only withstand such events but also minimize damage and protect human life. This project focuses on analyzing the seismic behavior of multi-storey high-rise buildings using computational modeling and finite element analysis (FEA). Through advanced simulation tools, the project evaluates how variations in structural configuration, material properties, and damping systems affect the overall response of a structure during earthquake events. Comparative analysis is carried out between different lateral load-resisting systems—such as moment-resisting frames, shear walls, and outrigger systems—to identify which configuration provides optimum performance under seismic loading.

The introduction of energy-dissipation devices and retrofitting techniques is also examined as part of this study to enhance structural resilience. By assessing parameters such as storey displacement, drift ratio, base shear, and stress distribution, the project aims to locate critical zones that may be

prone to failure. The insights gained from this research will contribute to developing safer and more efficient design methodologies that comply with national and international seismic design standards, including IS 1893 (Part 1): 2016. Ultimately, this study emphasizes the importance of incorporating seismic analysis and earthquake-resistant design principles in the planning and construction of high-rise buildings. The findings are expected to aid engineers and designers in improving the performance of tall structures in seismic zones, thereby ensuring the safety of occupants, the integrity of infrastructure, and the sustainability of urban development.

METHODOLOGY

The methodology adopted in this study is organized into four major phases, namely model development, pre-processing, seismic analysis, and post-processing, to ensure an accurate and systematic evaluation of the seismic behavior of high-rise buildings using Finite Element Methods (FEM). This structured approach allows realistic simulation of earthquake effects and enables reliable assessment of structural performance under seismic loading.

In the first phase, detailed three-dimensional structural models of high-rise buildings are developed using a web-based modeling platform. The complete geometry of the building, including beams, columns, slabs, shear walls, and outrigger systems (where applicable), is modeled using appropriate nodes and elements. Boundary conditions and support restraints are defined to represent realistic foundation behavior. Material properties such as elasticity, density, Poisson's ratio, and strength parameters of concrete and steel are assigned according to standard design codes. All relevant loads, including dead load, live load, wind load, and seismic load, are applied to the structure to simulate real operating conditions.

The second phase involves mesh generation and pre-processing of the structural model. An automatic finite element mesh is generated to divide the structure into smaller elements, which improves computational accuracy and stability. The geometry, connectivity, boundary conditions, load combinations, and damping properties are carefully verified. This pre-processing stage ensures that the model is correctly configured and suitable for dynamic seismic analysis.

In the third phase, seismic analysis is carried out using an FEM-based solver. Either time-history

analysis or response spectrum analysis is performed to evaluate the building's dynamic response under earthquake ground motions. Important response parameters such as storey displacement, inter-storey drift ratio, base shear, stress distribution, and natural frequencies are computed. These parameters are used to assess the stiffness, stability, and energy dissipation capability of the high-rise structure during seismic events.

The final phase consists of post-processing and result interpretation. The analysis outputs are visualized in the form of deformation shapes, stress contours, and response graphs. Critical zones that are susceptible to damage or failure are identified from these visualizations. Detailed reports in PDF and spreadsheet formats are generated to summarize the seismic performance of the building. This comprehensive methodology enables effective comparison of different structural configurations and supports improved seismic design and retrofitting decisions.

IMPLEMENTATION –

The proposed seismic analysis framework for high-rise buildings is implemented through a systematic multi-stage computational workflow that integrates structural modeling, dynamic analysis, and performance optimization using Finite Element Analysis (FEA). The implementation begins with the input stage, where all essential building and seismic data are collected. This includes the geometric configuration of the building such as plan layout, elevation, height, and number of storeys, along with material properties of concrete and steel used in the structural elements. Seismic parameters such as earthquake intensity, frequency content, duration, and ground motion records corresponding to the seismic zone are also incorporated. These inputs form the basis for developing an accurate numerical representation of the real-world structure.

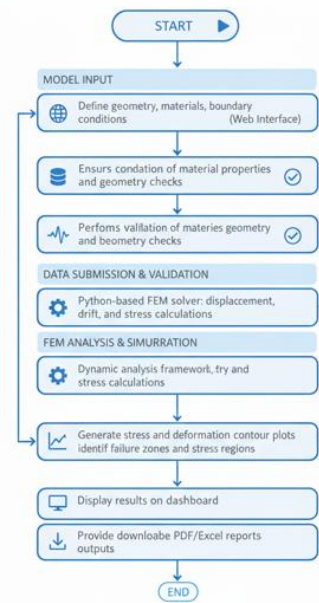


Figure 2: System WorkFlow

In the modeling stage, the high-rise building is converted into a three-dimensional finite element model. All major structural components, including beams, columns, slabs, and shear walls, are defined using appropriate element types and material properties. Where applicable, energy dissipation systems such as base isolators or tuned mass dampers are incorporated into the model to enhance seismic performance. This stage ensures that the computational model realistically captures the stiffness, mass distribution, and damping characteristics of the actual building.

The seismic behavior of the structure is then evaluated in the analysis stage using dynamic simulation techniques. Response spectrum analysis is performed to estimate peak values of displacement, inter-storey drift, and acceleration under standard seismic conditions. In addition, time-history analysis is carried out using real earthquake ground motion records to simulate the building's response over time. These analyses allow the determination of vibration modes, force distribution, and overall dynamic behavior of the structure during seismic events.

Following the analysis, the optimization stage is used to interpret the results and improve the structural design. Key performance parameters such as storey displacement, inter-storey drift, stress distribution, and base shear are examined to identify regions of excessive deformation or high stress concentration. Critical failure zones within the structure are located, and design modifications such as the addition of shear walls, bracing

systems, or damping devices are proposed to enhance seismic resistance and structural stability.

Finally, in the output stage, the results are presented in the form of detailed numerical reports and graphical visualizations. Deformation shapes, stress contour plots, and response graphs are generated to illustrate the seismic performance of the building. Retrofitting and design improvement recommendations are also provided based on the analysis outcomes. This integrated implementation framework enables a comprehensive evaluation of the seismic resilience of high-rise buildings and supports informed decision-making for safer and more efficient structural design.

RESULTS –

The seismic analysis carried out in this study reveals important insights into the dynamic behavior of high-rise buildings subjected to earthquake loading. One of the most significant observations is that maximum lateral displacement and inter-storey drift occur predominantly in the upper floors of the building. This is primarily due to the accumulation of lateral forces along the height of the structure and the increased flexibility of upper storeys. As the elevation increases, the stiffness of the building decreases relative to the applied seismic forces, resulting in larger horizontal movements. Excessive inter-storey drift at higher levels can lead to damage in non-structural components such as partition walls, glass facades, and mechanical installations, and may also contribute to the overall instability of the structure.

The stress distribution patterns obtained from the finite element analysis indicate that high stress concentrations are localized at beam–column joints and at the connections between shear walls and floor slabs. These regions act as critical load-transfer points and are therefore subjected to intense internal forces during seismic excitation. The repeated cyclic loading caused by earthquake ground motions further amplifies these stresses, making such joints highly susceptible to cracking, yielding, and eventual failure. Identifying these critical zones is essential for designing effective reinforcement detailing and for planning retrofitting strategies in existing buildings.

Another key finding of the study is the relationship between base shear and the physical characteristics of the building. The results show that base shear increases significantly with the height and mass of the structure. Taller and heavier buildings attract larger inertial forces during earthquakes, leading to

higher base reactions. This highlights the importance of optimizing building mass and stiffness distribution during the design stage to minimize seismic demand and improve overall performance.

The inclusion of damping mechanisms such as tuned mass dampers (TMDs) and base isolation systems was found to considerably enhance seismic response. These systems effectively absorb and dissipate a portion of the seismic energy, thereby reducing the amplitude of vibrations transmitted to the main structure. The simulation results demonstrated a noticeable reduction in storey displacement, inter-storey drift, and stress levels when damping devices were employed. This confirms that supplemental damping plays a crucial role in improving the comfort, safety, and durability of high-rise buildings during strong ground motions.

Furthermore, a comparison of different structural configurations revealed that buildings designed with reinforced concrete moment-resisting frames combined with shear wall systems exhibited superior seismic performance. The shear walls provide significant lateral stiffness and strength, while the frame system contributes to energy dissipation and ductility. This combination allows the building to resist large seismic forces while maintaining structural integrity and controlled deformation. Consequently, the study confirms that an integrated design approach, incorporating both efficient structural systems and modern damping technologies, significantly enhances the seismic resilience of high-rise buildings.

Overall, the findings emphasize that careful structural configuration, proper material selection, and the use of advanced damping systems are essential for ensuring the safety and performance of tall buildings in seismic regions. The results obtained from this study provide valuable guidance for the design, evaluation, and retrofitting of high-rise structures to withstand future earthquake events.

CONCLUSION –

This study concludes that the seismic performance of high-rise buildings is significantly governed by key structural parameters such as building height, mass distribution, and overall structural configuration. As the height and weight of a structure increase, the seismic demand also rises, leading to higher displacements, inter-storey drifts, and internal forces. Therefore, the careful selection

and optimization of these parameters during the design stage are crucial for achieving satisfactory seismic performance.

The analysis further reveals that critical structural regions, particularly beam–column joints and shear wall intersections, play a vital role in the stability of high-rise buildings during earthquake events. These zones are responsible for transferring large forces and moments and are highly susceptible to damage under cyclic seismic loading. Hence, proper detailing, reinforcement, and strengthening of these components are essential to prevent progressive failure and to maintain the overall integrity of the structure.

The inclusion of seismic control mechanisms, such as tuned mass dampers and base isolation systems, has been shown to significantly enhance the seismic response of high-rise buildings. These damping systems effectively reduce lateral displacement, inter-storey drift, and stress concentrations by dissipating a portion of the earthquake-induced energy. As a result, they not only improve structural safety but also increase occupant comfort and reduce the likelihood of damage to both structural and non-structural elements.

Moreover, the comparative evaluation of different structural configurations demonstrates that reinforced concrete frame structures integrated with shear wall systems provide superior seismic resistance when compared to conventional moment-resisting frames. The combined action of shear walls and frames improves lateral stiffness, strength, and energy dissipation capacity, leading to more controlled and stable behavior under seismic loading.

Overall, the study emphasizes that the adoption of optimized structural design strategies, along with modern seismic control technologies, is essential for ensuring the safety, durability, and code compliance of high-rise buildings in earthquake-prone regions. The findings provide valuable guidance for engineers and designers in developing safer and more resilient tall structures capable of withstanding future seismic events.

REFERENCES –

- [1] A. K. Chopra, “Dynamics of structures: theory and applications to earthquake engineering,” Prentice Hall, 2017.
- [2] R. W. Clough and J. Penzien, “Dynamics of structures,” McGraw-Hill, 2003.
- [3] T. Paulay and M. J. N. Priestley, “Seismic design of reinforced concrete and masonry buildings,” Wiley, 1992.
- [4] International Code Council, “International building code (IBC 2021),” ICC, 2021.
- [5] American Society of Civil Engineers, “ASCE 7-22: minimum design loads and associated criteria for buildings and other structures,” ASCE, 2022.
- [6] Federal Emergency Management Agency, “FEMA 356: prestandard and commentary for the seismic rehabilitation of buildings,” FEMA, 2000.
- [7] Federal Emergency Management Agency, “FEMA 440: improvement of nonlinear static seismic analysis procedures,” FEMA, 2005.
- [8] F. Naeim, “The seismic design handbook,” Kluwer Academic Publishers, 2001.
- [9] Y. Bozorgnia and V. V. Bertero, “Earthquake engineering: from engineering seismology to performance-based engineering,” CRC Press, 2004.
- [10] H. Krawinkler, “Performance-based seismic design,” *Journal of Structural Engineering*, ASCE, vol. 126, no. 7, 2000.
- [11] E. Miranda and V. V. Bertero, “Evaluation of strength reduction factors for earthquake-resistant design,” *Earthquake Spectra*, vol. 10, 1994.
- [12] M. J. N. Priestley, G. M. Calvi, and M. J. Kowalsky, “Displacement-based seismic design of structures,” IUSS Press, 2007.
- [13] V. V. Bertero, “Lessons learned from recent earthquakes and research and implications for seismic design codes and practices,” *Earthquake Engineering & Structural Dynamics*, 1992.
- [14] A. S. Veletsos and N. M. Newmark, “Effect of inelastic behavior on the response of simple systems to earthquake motions,” *Bulletin of the Seismological Society of America*, 1960.
- [15] M. Paz and W. Leigh, “Structural dynamics: theory and computation,” Springer, 2004.
- [16] International Conference of Building Officials, “Uniform building code (UBC 1997),” 1997.
- [17] International Organization for Standardization, “ISO 3010: seismic actions on structures,” ISO, 2017.
- [18] B. S. Taranath, “Structural analysis and design of tall buildings,” CRC Press, 2016.
- [19] D. C. Rai and C. V. R. Murty, “Design of non-structural elements for seismic forces,” *Earthquake Spectra*, 2006.
- [20] J. W. Wallace, “Behavior, design, and modeling of structural walls and coupling beams,” *Journal of Structural Engineering*, ASCE, 2007.
- [21] M. Shinozuka, “Nonlinear response of tall buildings to seismic excitations,” *Journal of the Engineering Mechanics Division*, ASCE, 1968.
- [22] X. Lu, C. Lin, and L. Xie, “Seismic analysis of super-tall buildings,” *Engineering Structures*, vol. 29, 2007.

- [23] Q. S. Li and J. Q. Fang, "Seismic analysis of tall buildings with outriggers," *Journal of Structural Engineering*, ASCE, 2003.
- [24] I. Takewaki, "Building control with passive dampers: optimal performance-based design for earthquakes," Wiley, 2009.
- [25] A. S. Whittaker, V. V. Bertero, and C. L. Thompson, "Earthquake resistant design of tall buildings," *Earthquake Spectra*, vol. 12, no. 4, 1996.
- [26] B. S. Taranath, "Tall building design: steel, concrete, and composite systems," CRC Press, 2012.
- [27] J. P. Moehle, "Seismic design of reinforced concrete buildings," McGraw-Hill, 2014.
- [28] W. F. Chen and E. M. Lui, "Earthquake engineering for structural design," CRC Press, 2005.
- [29] Y. C. Kurama and K. T. Farrow, "Seismic design of high-rise buildings using energy dissipation systems," *Earthquake Spectra*, 2003.
- [30] T. C. Pan and Z. X. Li, "Seismic performance of high-rise buildings with tuned mass dampers," *Structural Control and Health Monitoring*, 2005.



IJRTI